

PORTER FLOODPLAIN RESTORATION



Multi-Municipal, Schuylkill County, PA
 Pottsville, Orwigsburg, Friendsburg
 and Auburn, PA USGS 7.5' Topographic Quadrangles

Basemap: U.S. Geological Survey "NGS_TopoUS_2D",
 (National Geographic Society, 2010) <http://services.arcgisonline.com/arcgis/rest/info?only=metadata>, retrieved on 7/25/2012.

SCHUYLKILL HEADWATERS ASSOC., INC.
Floodplain Restoration
Topographic Basemap
 Project No. 0423-2000



1 inch = 4,000 feet

RETTEW

PROJECT NUMBER: 0423-2000



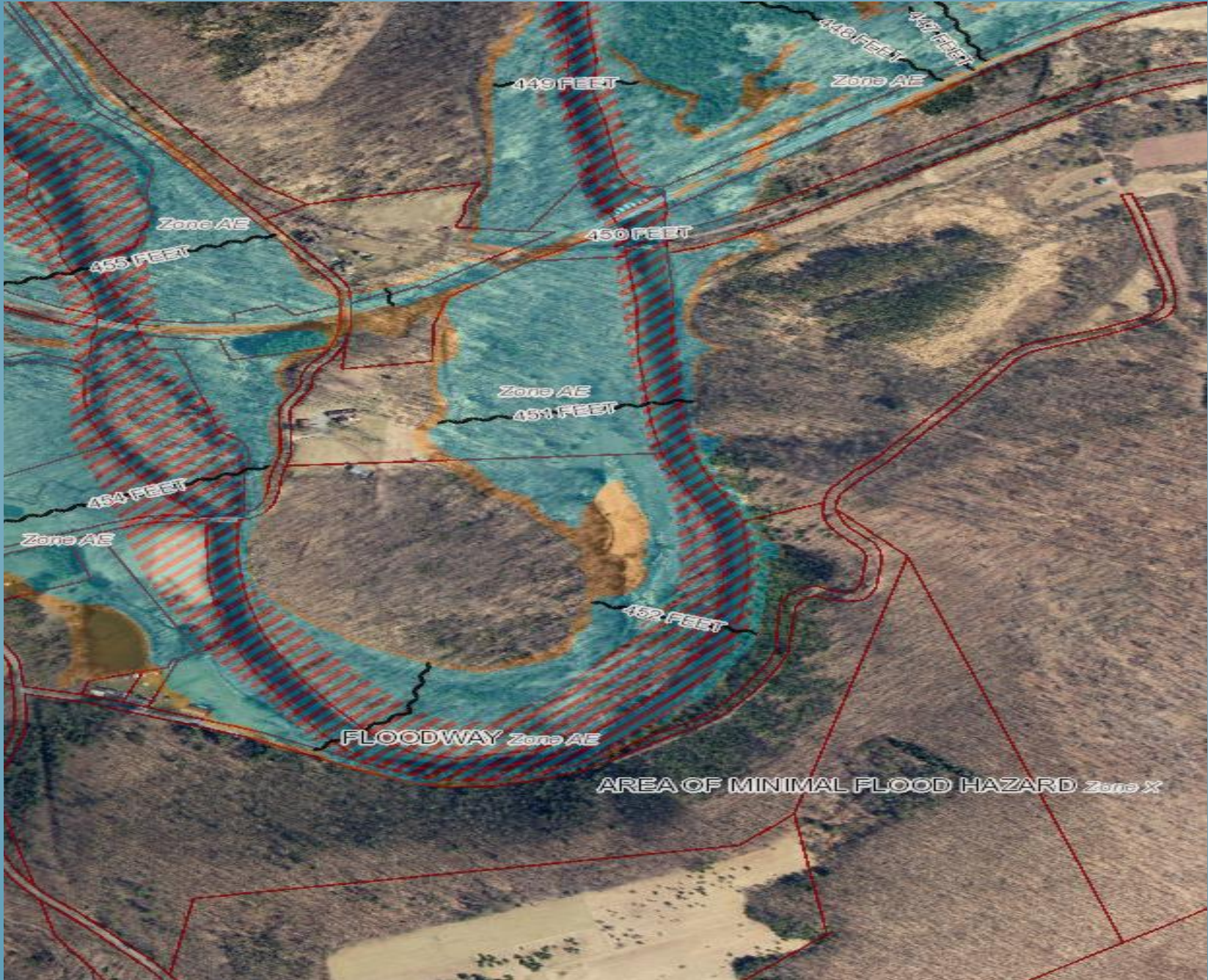














Google Earth











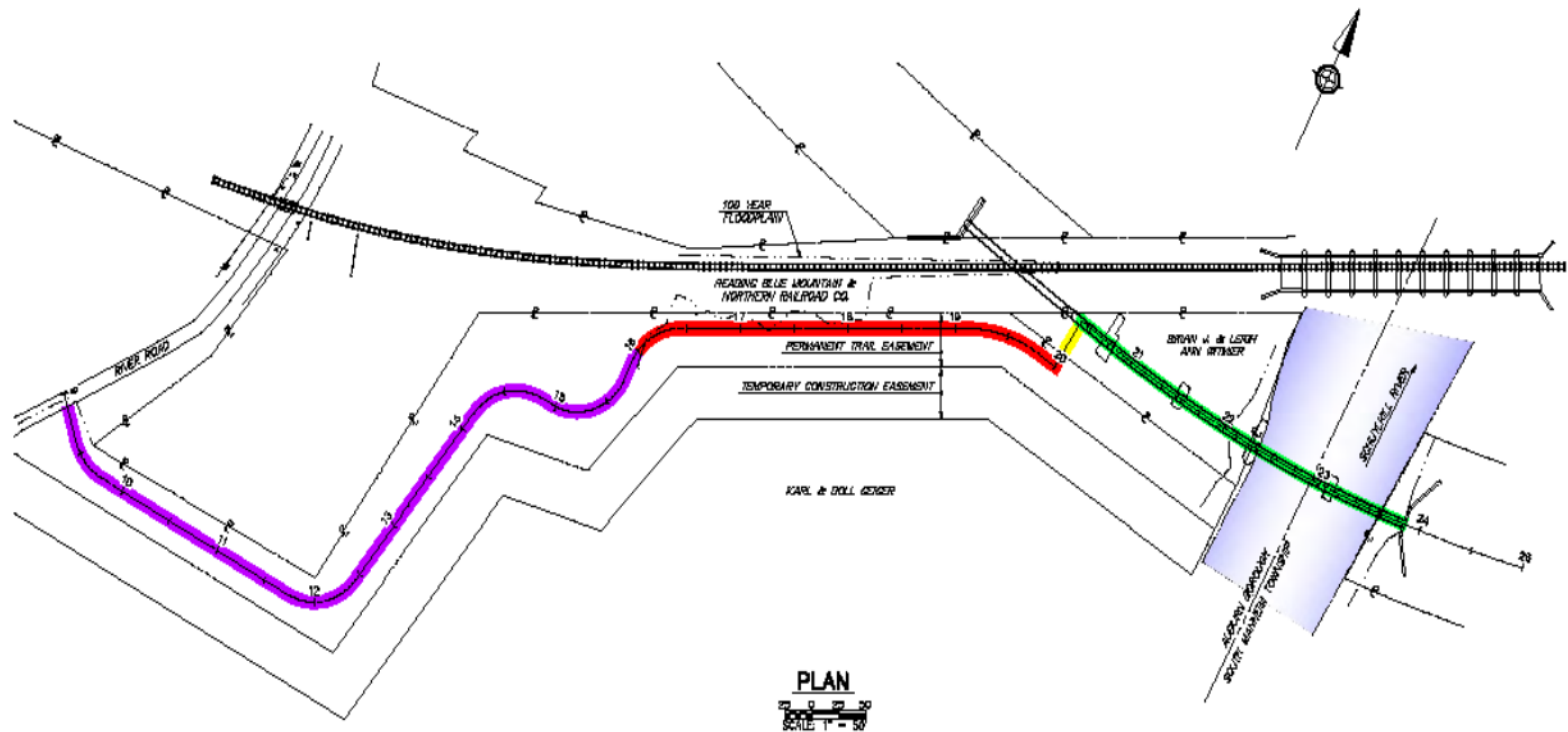












LEGEND

- ON-GRADE TRAIL
- TRAIL ON MSE WALLS
- CONNECTOR BRIDGE
- RE-DECK EXISTING BRIDGE

Mark	Description	By	CHK'd	Rev'd	Date
REVISIONS					

SCHUYLKILL RIVER GREENWAY ASSOC
SCHUYLKILL RIVER TRAIL
SCHUYLKILL COUNTY
BARTRAM TRAIL SEGMENT
 AUBURN BOROUGH & SOUTH MANHEIM TOWNSHIPS
 (ABANDONED PA RR, SCHUYLKILL RIVER BRANCH, BRIDGE NO. 83.40)
 OVER SCHUYLKILL RIVER
AUBURN PEDESTRIAN BRIDGE
SITE PLAN

SHEET 1 OF 3



