

Protecting Schuylkill Waters

The Schuylkill Watershed Initiative

In 2004, the U.S. Environmental Protection Agency awarded a \$1.5 million Targeted Watershed Initiative Grant to the Partnership for the Delaware Estuary for water quality improvement and demonstration projects in the over 2,000 square mile Schuylkill River Watershed. This grant provided seed funding for an impressive collection of projects to achieve measurable results addressing water quality issues surrounding abandoned mine drainage, storm water runoff, and agricultural runoff. Priority projects were identified by the Schuylkill Action Network, administered by the Partnership for the Delaware Estuary, and distributed to over 20 partners throughout the watershed. Grant funds were also utilized to focus on public education and outreach, helping to make the land-water connection for thousands of watershed residents.

Together, these projects leveraged an additional \$2 million, for an overall investment of \$3 million in the Schuylkill River Watershed. Many of the matching funds were provided by the state of Pennsylvania through its Growing Greener Program. The Philadelphia Water Department played a critical role in this effort by providing network leadership as well as technical assistance and additional financial support for local project managers. The Philadelphia Water Department also oversaw the monitoring program for grant-funded projects. The Schuylkill Action Network and the Schuylkill Watershed Initiative Grant demonstrate how collaboration can yield positive results in a large and diverse watershed.

Seidel Farms Restoration

Before



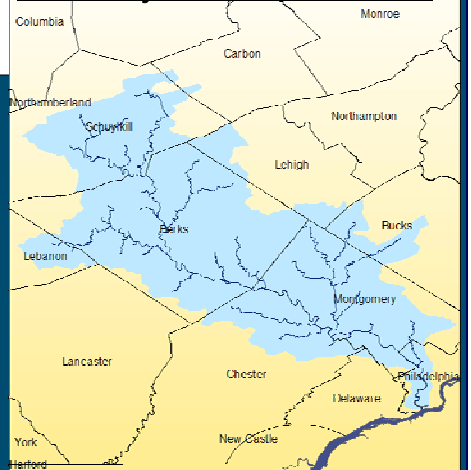
Seidel Farms Restoration

After



Green Lane Riparian Restoration

The Schuylkill River Watershed



Norristown Area School District
Stormwater Management

Before

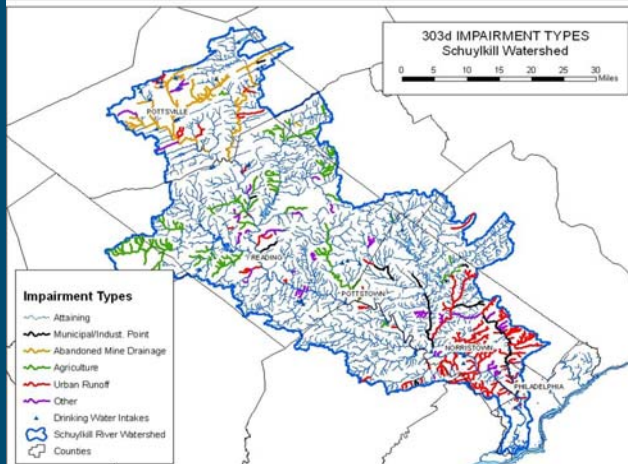


After



The Schuylkill Watershed Initiative

The Schuylkill River Watershed Initiative Grant provided the Partnership for the Delaware Estuary, Philadelphia Water Department, and the Schuylkill Action Network a unique opportunity to address a variety of watershed threats, across a large watershed, with a diversity of partners. Together, the SAN and the Schuylkill Watershed Initiative Grant were able to create coordinated and cooperative approaches to address water quality issues and actions, setting the stage for a future of collaborative successes in the Schuylkill River watershed.



- Over 40 projects addressing the biggest threats to our water supply, including stormwater runoff, agriculture runoff, and abandoned mine drainage
- Approximately 40,000 ft of streambank fencing to keep cattle and infectious pathogens out of our water supply
- 6200 ft of streamside plantings expected to remove 360 tons/year of sediment, 512 tons/year of phosphorous, and 928 tons/year of nitrogen from agriculture land
- 5 farms certified for environmental excellence
- 9 major demonstration projects on schools, parks and other public spaces to treat stormwater and provide educational opportunities for watershed residents - young and old!
- 3 demonstration projects expected to treat 6.5 million gallons of abandoned mine discharge per day and remove up to 780 tons of metals
- A plan to treat an additional 35 million gallons per day of mine discharge
- A new SAN website (www.schuylkillwaters.org) to help gain support for source water protection and highlight the Schuylkill River as a valuable resource
- 5 new Environmental Advisory Committees created in priority areas



Brookside Country Club Before



Brookside Country Club After



Pine Forest AMD Treatment



Partnership for the Delaware Estuary
One Riverwalk Plaza
110 South Poplar St.,
Suite 202
Wilmington, DE 19801



Philadelphia Water Department
Office of Watersheds
1101 Market St., 4th Floor
Philadelphia, PA 19107



U.S. Environmental Protection Agency
Region III
1650 Arch St., 2nd Floor
Philadelphia, PA 19103